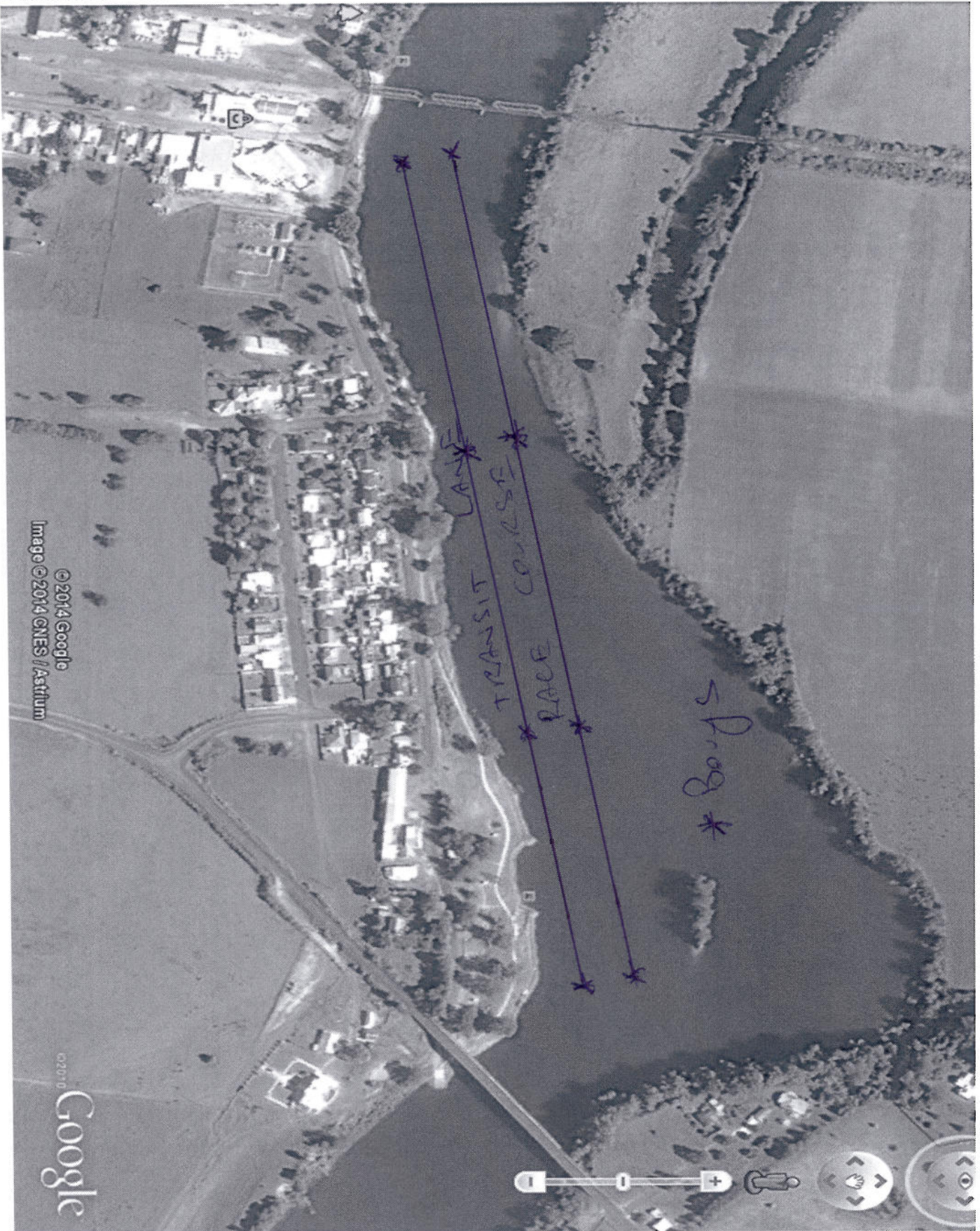


Attachment 2 – Course Map



Attachment 1 - River map and safety vessels and transit channel

Safety Vessels

4 safety vessels will be on hand for the duration of the regatta as detailed below:

Vessel 1 – Boat Race Official following race craft

Vessel 2 – Boat Race Official following race craft

Vessel 3 – Western stake boat to alert oncoming recreation craft

Vessel 4 – Eastern stake boat to alert oncoming recreation craft

All vessels will have a licenced driver and qualified boat race official, carry two way radios for communication with race control and all required maritime safety equipment. In the event of any on water incident or rescue all vessels will be able to respond.

Recreational Channel

A recreational channel will be available for the transit of vessels not involved in the regatta. This channel will have channel markers.